

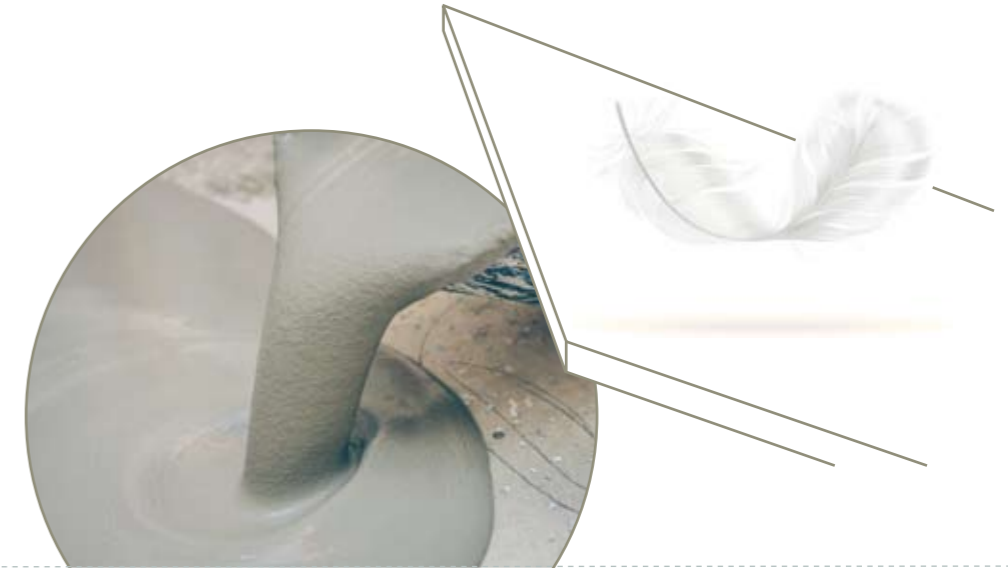
EXPO MOBIL®

EXPO Light **Beton**
Diversely concrete.

“
uniquely modern
REAL CONCRETE
”

Clear, modern lines with sharp corners, or classic urban looks with a lot of character: concrete can do it all, making it one of the most versatile materials. At the same time, it's as unique as a fingerprint. An artificial stone for artful individuality.

EXPO Light**Beton**



LOOK & FEEL

real concrete at the weight of an aluminium composite panel



100%
CONCRETE
surface
indistinguishable from solid concrete



THIN
install on walls and floors



6 - 15 kg/m²
LIGHT
like an aluminium composite panel

4E certified – suitable as a work surface
versatile – for anything from interior design to gastronomy

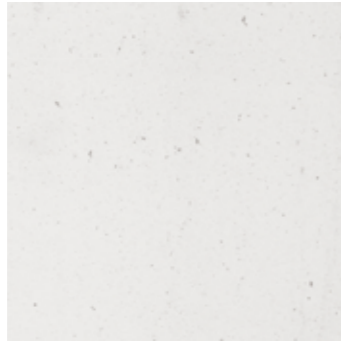
EXPO LightBeton

STANDARD

With its 1.5mm thin layer of concrete on a 16mm MDF panel, **EXPO LightBeton Standard** is flexible in use. The panels are ideal for use indoors.



K 965 Classic grey



J 966 Classic white



M 956 Classic anthrazit



M 955 Retro

modular & reusable

flooring | wall cladding

Features

100% concrete surface
individual look thanks to voids and colour inconsistencies

Processing

Circular saw with wood saw blade | Drilling and milling with wood drill bit | Edging with ABS or LightBeton like standard veneer panels

Special properties

Fire behaviour DIN EN 13501-1 B-s2, d0 (composite certificate) | concrete sealed with matt 2K acrylic coating, water repellent

Dimensions

ca. 3020 x 1250 mm +/- 5 mm | further dimensions on request

Thickness & weight

19 mm | 15 kg/m²



EXPO LightBeton
STANDARD

LightBeton
J 966 Classic white

EXPO LightBeton

FLEXLINE

With a 1.5mm layer of concrete on a 2.5mm flex mineral layer, **EXPO LightBeton Flexline** is perfect for installation directly on floors and walls. The Flexline panels are ideal for indoor use.



K 965 Classic grey



J 966 Classic white



M 956 Classic anthrazit



M 955 Retro

Flexible permanent installation

flooring | wall cladding | door and furniture décor

Features

100% concrete surface
individual look thanks to voids and colour inconsistencies | available with or without bevel

Processing

Circular saw with wood saw blade | Drilling and milling with wood drill bit | bonding with MS polymer glue

Special properties

Fire behaviour front: B1 according to DIN 4102-1 | Fire behaviour base plate: Bfl-s1 according to DIN EN 13501-1
concrete sealed with 2K acrylic coating, water repellent

Dimensions

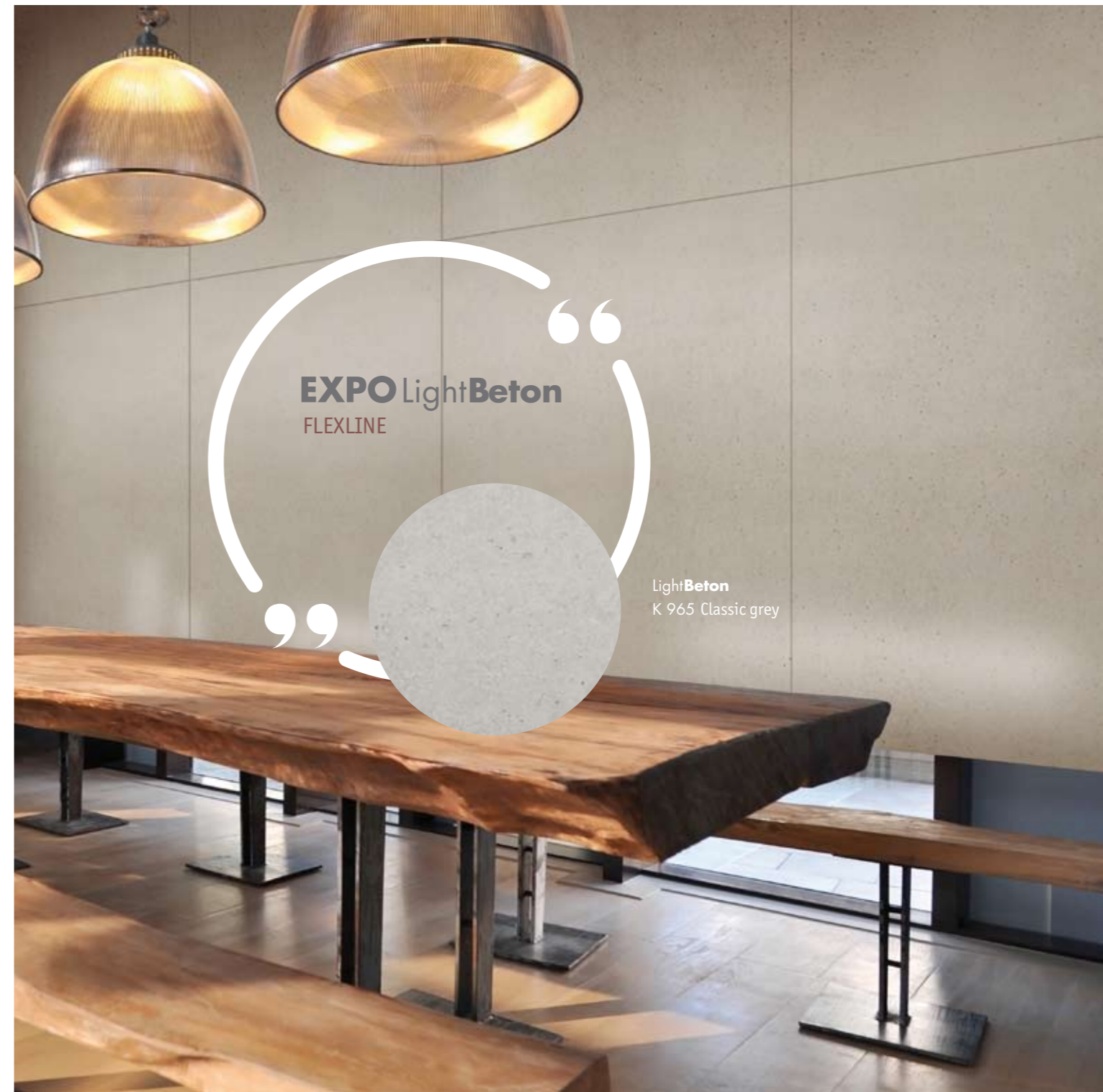
Untrimmed without bevel 2650 x 1020 mm / 2650 x 1250 mm +/- 5 mm | further dimensions on request
Fixed dimensions with bevel 1000 x 500 mm / 1200 x 600 mm +/- 0.3 mm

Thickness & weight

4 mm | 6.65 kg/m²



Depiction
Installation with glue



EXPO LightBeton

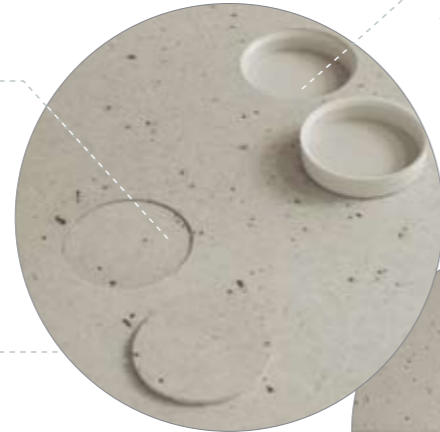
FORMWORK

EXPOLightBeton Formwork combines the flexibility of the EXPOLightBeton line with the characteristics of actual formwork with anchor holes. The panels are for indoor use.



K 965 Classic grey

Formwork 01
3 mm millings with 1.5 mm
LightBeton plate



Formwork 02
7 mm millings with plastic cap inserts



individual & authentic

wall cladding

Features

100% concrete surface
individual look thanks to voids and colour inconsistencies | characteristic look of formwork with two types of anchor holes and all round seam

Processing

Circular saw with wood saw blade | Drilling and milling with wood drill bit | Edging with ABS or LightBeton like standard veneer panels

Special properties

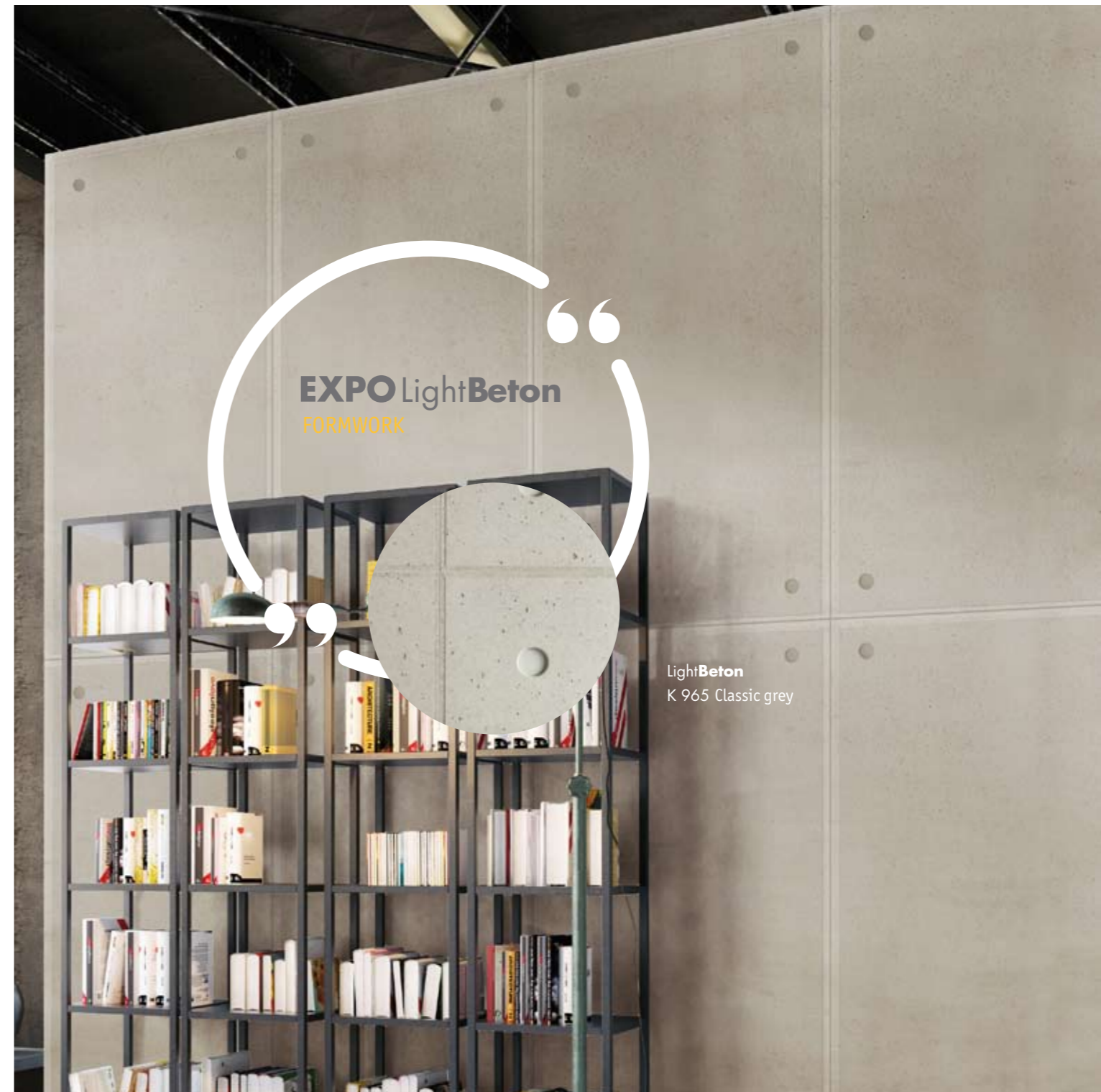
Fire behaviour DIN EN 13501-1 B-s2, d0 (composite certificate) | concrete sealed with matt 2K acrylic coating, water repellent | two décors available

Dimensions

Fixed dimensions 2000 x 1200 mm +/- 0.3 mm | 1000 x 1200 mm +/- 0.3 mm | 600 x 1200 mm +/- 0.3 mm

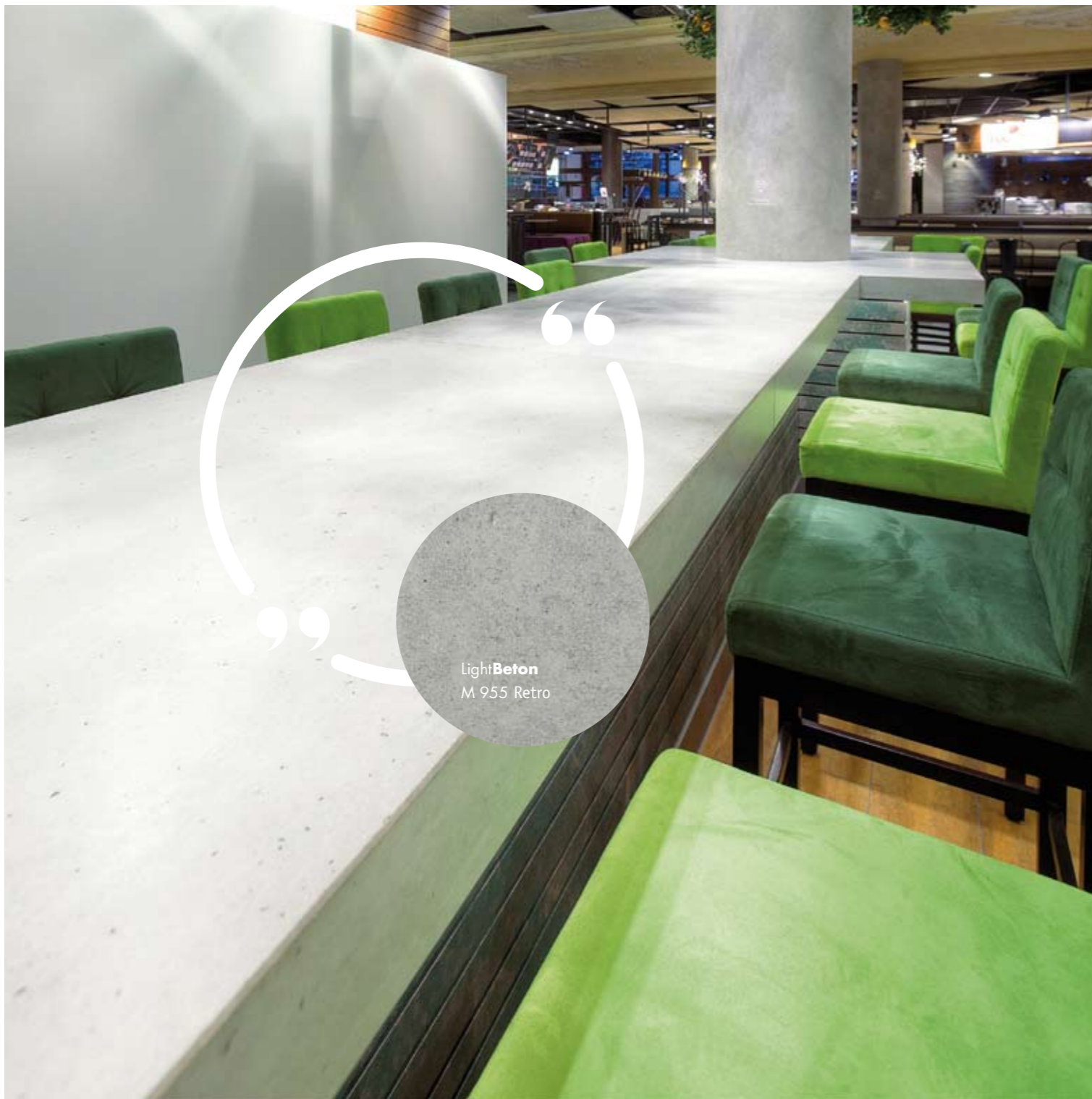
Thickness & weight

19 mm | 15 kg/m²



EXPO LightBeton
FORMWORK

LightBeton
K 965 Classic grey



EXPO LightBeton

STANDARD

FLEXLINE

FORMWORK

TECHNICAL DATA

Front

Material	LightBeton	LightBeton	LightBeton
Thickness	1.5 mm	1.5 mm	1.5 mm
Weight	2.25 kg/m ²	2.25 kg/m ²	2.25 kg/m ²

Base plate

Material	MDF	Flex-Mineralschicht	MDF
Thickness	16 mm	2.5 mm	16 mm
Weight	10.50 kg/m ²	4.40 kg/m ²	10.50 kg/m ²

Back

Material	LightBeton	-	LightBeton
Thickness	1.5 mm		1.5 mm
Weight	2.25 kg/m ²		2.25 kg/m ²

Composite panel

Thickness	19 mm	4 mm	19 mm
Weight	15 kg/m ²	6.65 kg/m ²	15 kg/m ²

Fire safety

Composite certificate B-s2, d0 (DIN EN 13501-1)	Front: B1 (DIN 4102-1) Base plate: Bfl-s1 (DIN EN 13501-1)	Composite certificate B-s2, d0 (DIN EN 13501-1)
---	---	---

CONCRETE SURFACE PROPERTIES

Abrasion resistance	DIN 68861-2	2A	High abrasion resistance
Scratch resistance	DIN 68861-4	4E	Worktop conform
Lightfastness	DIN 15187	<6	Blue scale
Fire behaviour	DIN EN 13501-1	B-s2, d0	Low-flammable
Concrete sealing	2K acrylic coating, matt, water repellent		

voids and colour inconsistencies are an expression of the natural qualities of concrete. LightBeton is not suitable for use as permanent flooring.

EXPOMOBIL®

EXPOMOBIL®-Messezubehör-Vertriebs-GmbH

Raiffeisenstraße 23

D-70794 Filderstadt

Fon +49 (0)711 77891 - 0

Fax +49 (0)711 77891 - 96

info@expomobil.de

www.expomobil.de

EXPOLightBeton Formwork 02 with all round seam K 965 Classic grey